

# MS Vivaldi

5 anchors - Danube River - 88 cabins



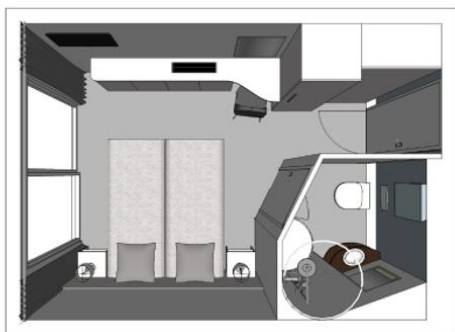
# MS Vivaldi

The MS Vivaldi sails on the Danube River.

## Interior design



## Cabins



- Middle Deck 1 double bed 10 m<sup>2</sup>
- Middle Deck 2 beds - disabled person 9 m<sup>2</sup>
- Middle deck 2 adjustable twin beds 10 m<sup>2</sup>
- Main Deck 1 double bed 10 m<sup>2</sup>
- Main deck 2 adjustable twin beds 10 m<sup>2</sup>
- Upper Deck 1 double bed 10 m<sup>2</sup>
- Upper deck 2 adjustable twin beds 10 m<sup>2</sup>

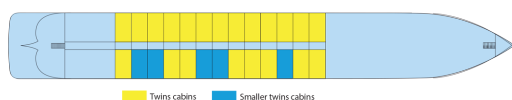
## Cabins equipments

- TV
- Telephone (for internal calls only)
- Bathroom with shower and toilet
- Towels
- Safe
- Independent air-conditioning
- Electricity 220V
- Wi-Fi

Please note that there is no laundry service on board the ship.

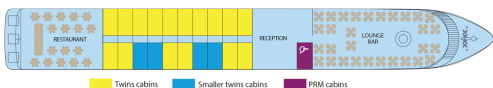
## Decks and technical details

### MAIN DECK 26 cabins

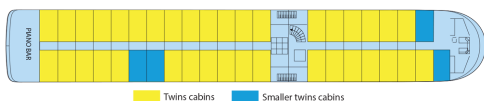


**Number of decks : 3**  
**Year Built : 2009**  
**Guest capacity : 176**  
**Length : 110**  
**Number of cabins : 88**  
**Width : 11.40**  
**Cabins outside**  
**Elevators**  
**PRM cabins**

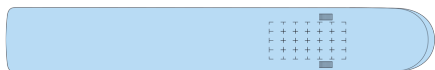
### MIDDLE DECK 21 cabins



### UPPER DECK 41 cabins



## SUN DECK



**MIDDLE DECK :** RESTAURANT - RECEPTION DESK - LOUNGE BAR WITH DANCEFLOOR

**UPPER DECK :** PIANORAMABAR - TERRACE

**SUN DECK :** FITNESS - SUN DECK